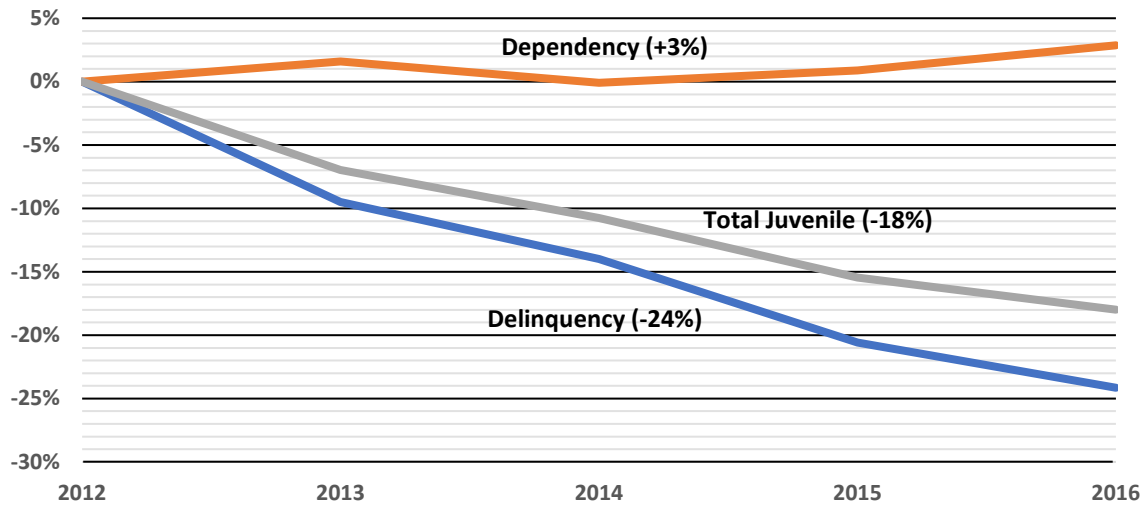


Percent Change in Delinquency and Dependency Caseloads in 23 States from 2012



If a specific case type representing the majority of a broader case category exhibits significant declines and thereby drives an overall decline, it may obscure a contrary movement among other less common cases. Such is the case with delinquency and dependency cases in 23 states over the last 5 years. Delinquency declined by 24 percent during that time, driving an overall decrease of 18 percent in Juvenile cases. But over that same period, Juvenile dependency cases have increased by 3 percent.

